

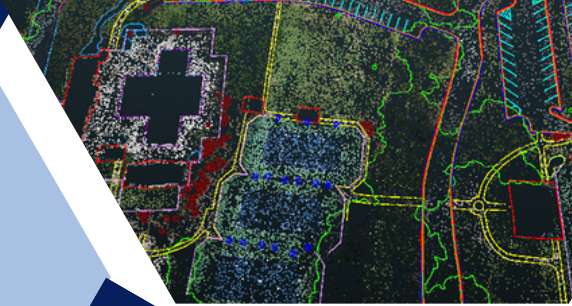


W&A ENGINEERING

A BETTER COMMUNITIES COLLABORATIVE COMPANY

LAND SURVEYING SERVICES

Building Better Communities



W&A Engineering offers a complete and comprehensive selection of land surveying services to support projects of all sizes. Our professional technicians are experienced in a wide range of skills that are vital to the success of any type of development project.



When coupling in-house land surveying with W&A's full suite of civil and planning services, our clients can be assured that all site information gathered by our surveyors is shared with our client's project team efficiently and accurately to save time and reduce overall project costs.



W&A's survey teams are able to provide cost-effective project solutions to our clients by following our proven and efficient project management and reporting practices. With this approach, W&A's teams are able to tackle projects of any size across the Southeast.

LAND SURVEYING

- ✓ Route Surveys
- ✓ As-built Surveys
- ✓ LiDAR & Remote Scanning
- ✓ Boundary & Topographic Surveys
- ✓ ALTA/ NSPS Land Title Surveys
- ✓ Construction Layout & Staking

About W&A ENGINEERING

W&A Engineering is a rapidly growing multidisciplinary engineering firm that provides total development solutions. Known for our innovative design, efficient engineering, and professional service, W&A Engineering is the trusted partner of community leaders and developers driving sustainable growth throughout the United States.



WWW.WAENGINEERING.COM



INFO@WAENGINEERING.COM



ATHENS • ATLANTA • AUGUSTA • CUMMING
MONROE • CHARLOTTE • NASHVILLE



Total Development Solutions

ACCURATE & EFFICIENT LAND SURVEYING



**BUILDING
BETTER
COMMUNITIES**



**Peachtree-DeKalb
Airport Hangar**



The Mark Atlanta



The Standard Atlanta



Nissan Stadium



Georgia Tech Dining



Georgia Square Mall



Caterpillar Plant



Nashville Industrial



Jefferson Courthouse



**Vanderbilt University
Medical Center**



Firefly Trail



**Tallessee Road
Subdivision**



Presbyterian Village



**North Athens
Redevelopment**

